



Gate bushing type LB

Version LB with extended length

TECHNICAL DATA

Dimensions

	Version (mm)						R
	$\varnothing A$	$\varnothing S$	$\varnothing T_1$	s	u	$\varnothing A_1$	
18LB	38	18	26	5	6	39 ¹	8

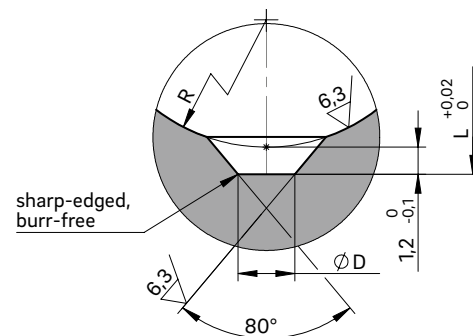
¹ $\varnothing A_1 = 43$ mm with nozzle type 5SEF/5DEF

NOTE

After eroding the gate bushing, it must be annealed to remove stress (1 hour at 470 °C).



ANTECHAMBER VERSIONS A/B

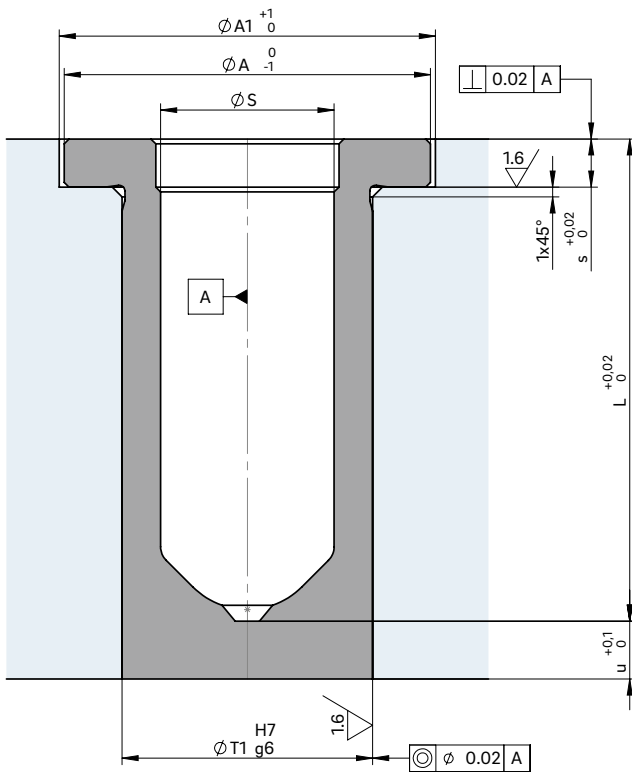


For open nozzles with a tip/open nozzles with a straight outlet for antechamber versions A/B and nozzle piece C

WEBCODE
23020



GATE BUSHING INSTALLATION



For gate bushings with an extended length, the gate contour goes through dimension "L"

Nozzle type designation	Gate bushing type/length (mm)			
	L = 50	L = 60	L = 80	L = 100
5SEF/5DEF	■ 18LB	■ 18LB	■ 18LB	
5SHF/5DHF	■ 18LB	■ 18LB	■ 18LB	■ 18LB
5STT/5DTT	■ 18LB	■ 18LB	■ 18LB	■ 18LB

■ available