



Single cold runner nozzle type 5DEW

Cold runner nozzle for direct injection

TECHNICAL DATA

5DEW

Material channel Ød 4.8 mm

Gate point Ød 0.4/0.6/0.8/1.0 mm

Nominal length of the nozzle (L) in mm

50 | 80



Contact us for further nozzle lengths!

■ available

NOTES

A cooling circuit can supply up to four nozzles connected in series with a cooling medium.

The following parts are included in the scope of delivery:

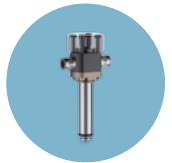
- Plug-in cooling connectors
- 2 PTFE connection hoses (1 m), flexible
 - Internal Ø 6 mm
 - External Ø 8 mm
 - min. bending radius R40

For replacement purposes:

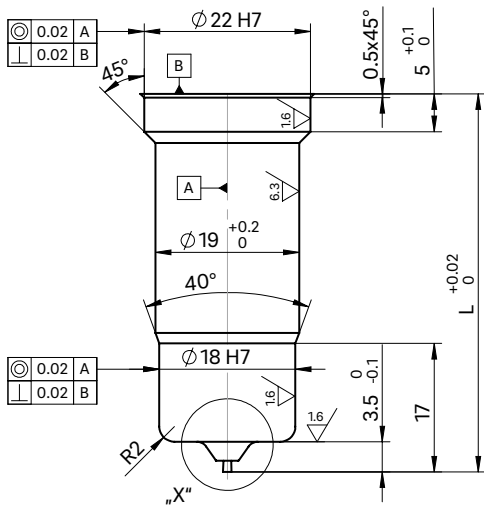
Order designation	Contents
80.774	Seal set
Z62/14 × 0.8/7.2	Plate spring



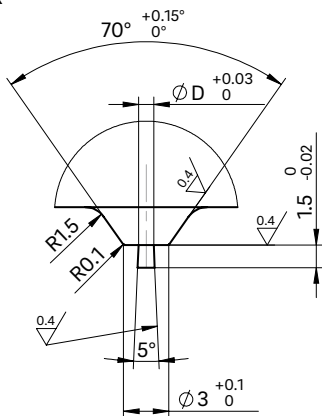
WEBCODE
61020



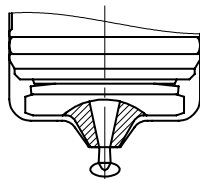
Prechamber design
Open nozzle



Detail X

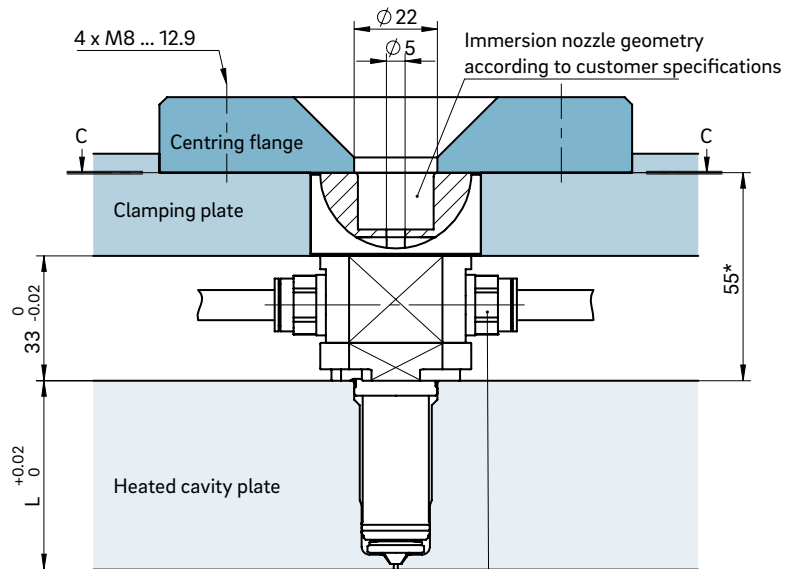


Design of the gate point for open cold runner systems



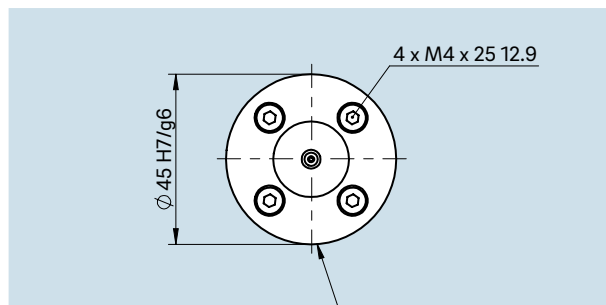
- Cylindrical section in gate point area
- Gate cone in mould insert opened conically in draft direction
- Plug catcher required
- Observe outline height

INSTALLATION



* The nozzle must be installed with a pretension of +0.02 mm to +0.03 mm.

Cross section C-C: recess for nozzle head



Adapter are in circumferential contact with the cooled clamping plate