



System cold runner nozzle type 3NMW

Cold runner nozzle for valve gate applications

TECHNICAL DATA

3NMW

Material channel Ød 2.8 mm

Gate point Ød 0.4 / 0.6 / 0.8 mm

Nominal length of the nozzle (L) in mm

50 | 80

Contact us for further nozzle lengths!

On request

NOTES

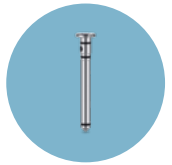
A cooling circuit can supply up to four nozzles connected in series with a cooling medium.

The following parts are included in the scope of delivery:

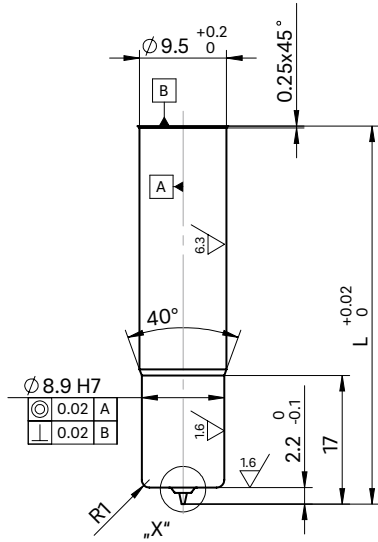
- Plug-in cooling connectors
- 2 PTFE connection hoses (1 m), flexible
 - Internal Ø 6 mm
 - External Ø 8 mm
 - min. bending radius R40



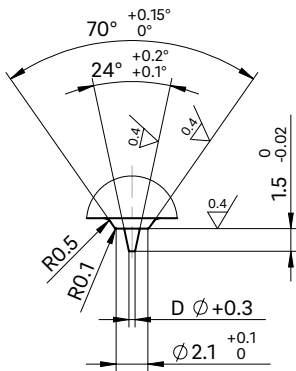
WEBCODE
62030



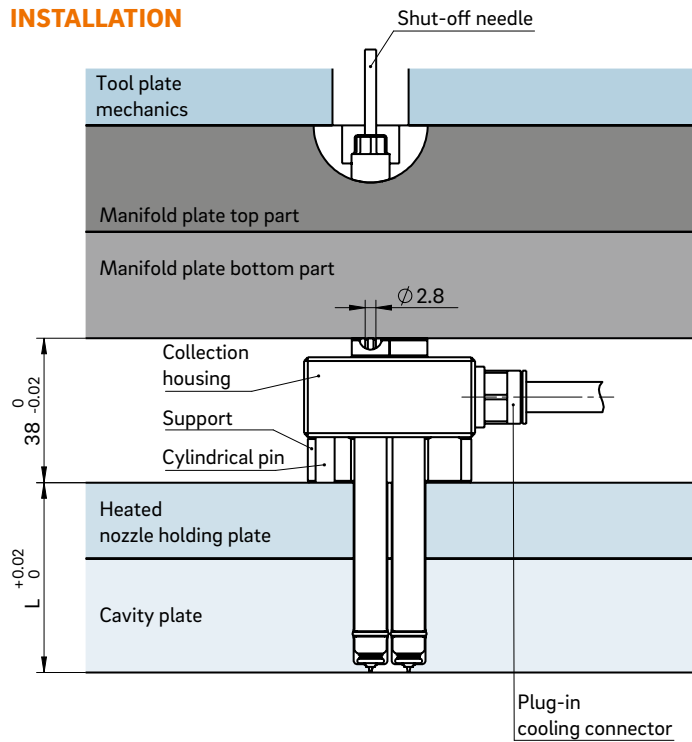
Prechamber design
Nozzle with needle guide



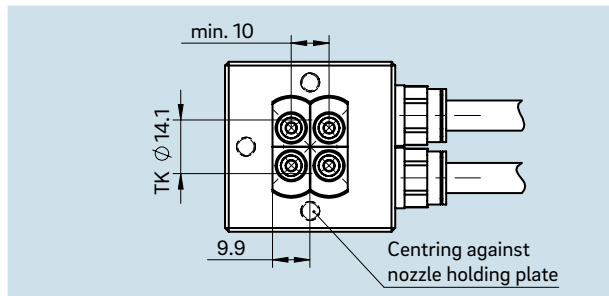
Detail X



INSTALLATION



Collection housing
Example of arrangement on a pitch circle



Collection housing
Example of arrangement in series

